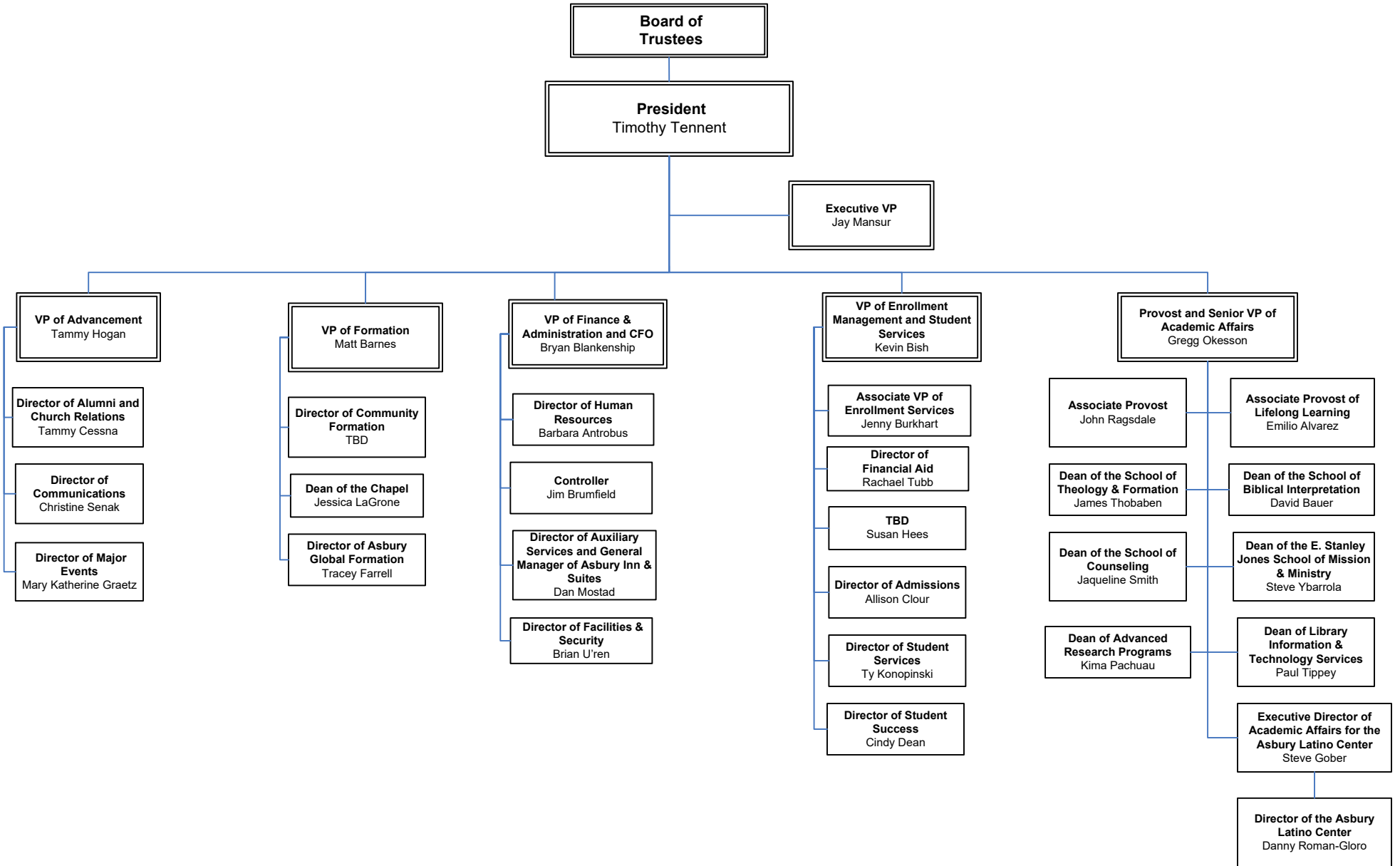


Asbury Theological Seminary

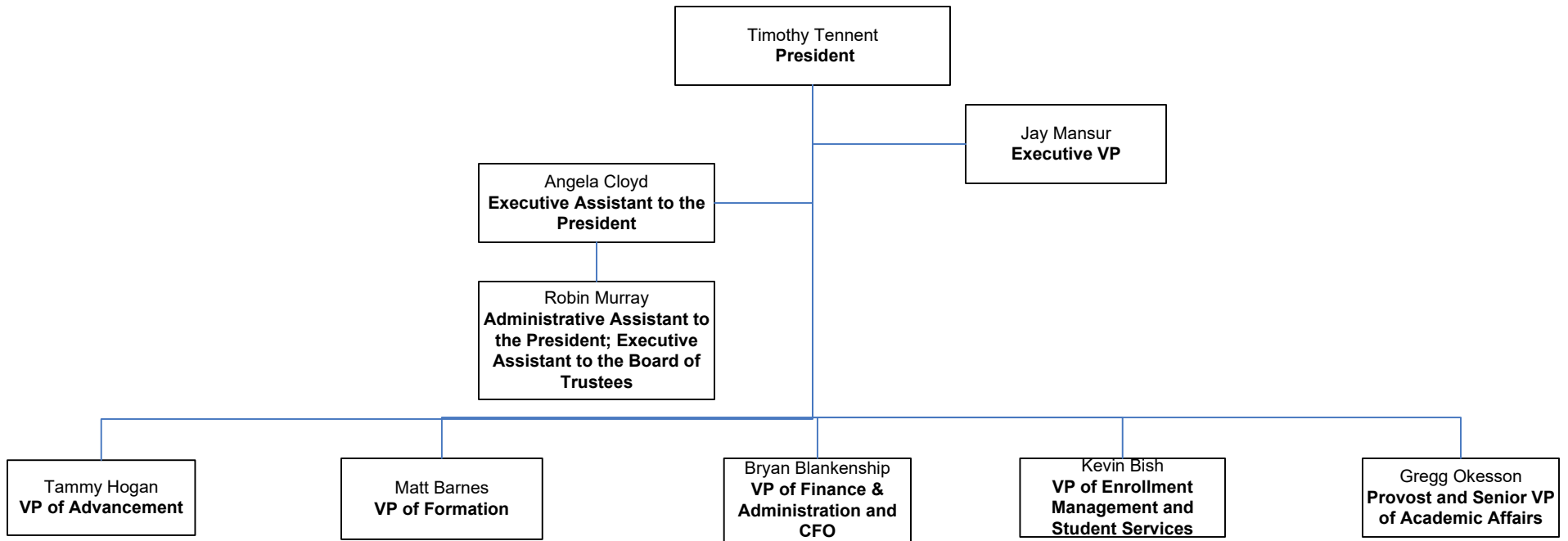
Organizational Charts

(as of February 23, 2023)

ATS Organization Chart

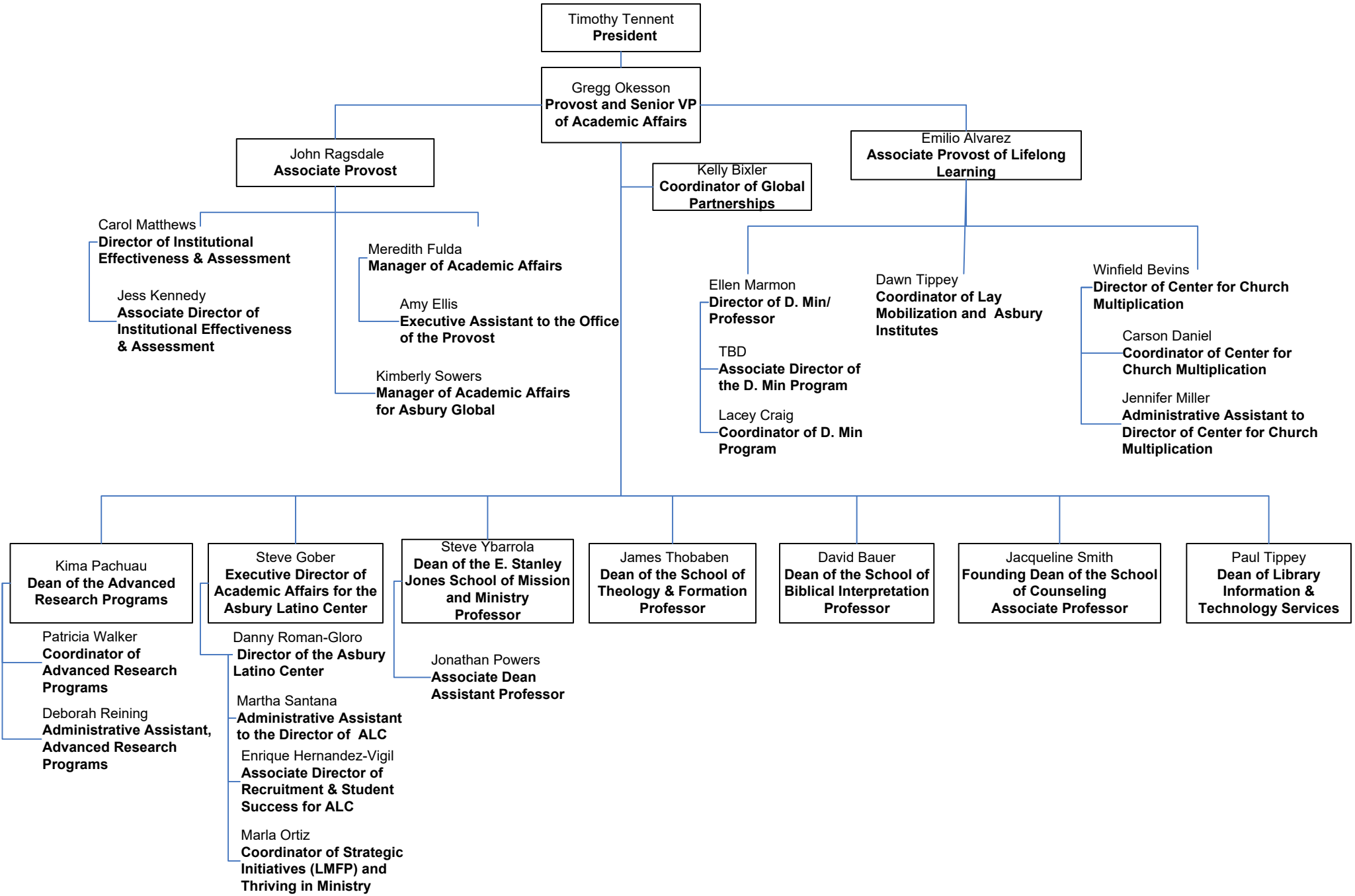


Office of the President



Shaded boxes indicate positions housed on the Florida Campus

Academic Affairs



Timothy Tennent
President

Gregg Okesson
**Provost and Senior VP
of Academic Affairs**

John Ragsdale
Associate Provost

Kelly Bixler
**Coordinator of Global
Partnerships**

Emilio Alvarez
**Associate Provost of Lifelong
Learning**

Carol Matthews
**Director of Institutional
Effectiveness & Assessment**

Meredith Fulda
Manager of Academic Affairs

Jess Kennedy
**Associate Director of
Institutional Effectiveness
& Assessment**

Amy Ellis
**Executive Assistant to the Office
of the Provost**

Kimberly Sowers
**Manager of Academic Affairs
for Asbury Global**

Ellen Marmon
**Director of D. Min/
Professor**

Dawn Tippey
**Coordinator of Lay
Mobilization and Asbury
Institutes**

TBD
**Associate Director of
the D. Min Program**

Lacey Craig
**Coordinator of D. Min
Program**

Winfield Bevins
**Director of Center for Church
Multiplication**

Carson Daniel
**Coordinator of Center for
Church Multiplication**

Jennifer Miller
**Administrative Assistant to
Director of Center for Church
Multiplication**

Kima Pachuau
**Dean of the Advanced
Research Programs**

Steve Gober
**Executive Director of
Academic Affairs for the
Asbury Latino Center**

Steve Ybarrola
**Dean of the E. Stanley
Jones School of Mission
and Ministry
Professor**

James Thobaben
**Dean of the School of
Theology & Formation
Professor**

David Bauer
**Dean of the School of
Biblical Interpretation
Professor**

Jacqueline Smith
**Founding Dean of the School
of Counseling
Associate Professor**

Paul Tippey
**Dean of Library
Information &
Technology Services**

Patricia Walker
**Coordinator of
Advanced Research
Programs**

Deborah Reining
**Administrative Assistant,
Advanced Research
Programs**

Danny Roman-Gloro
**Director of the Asbury
Latino Center**

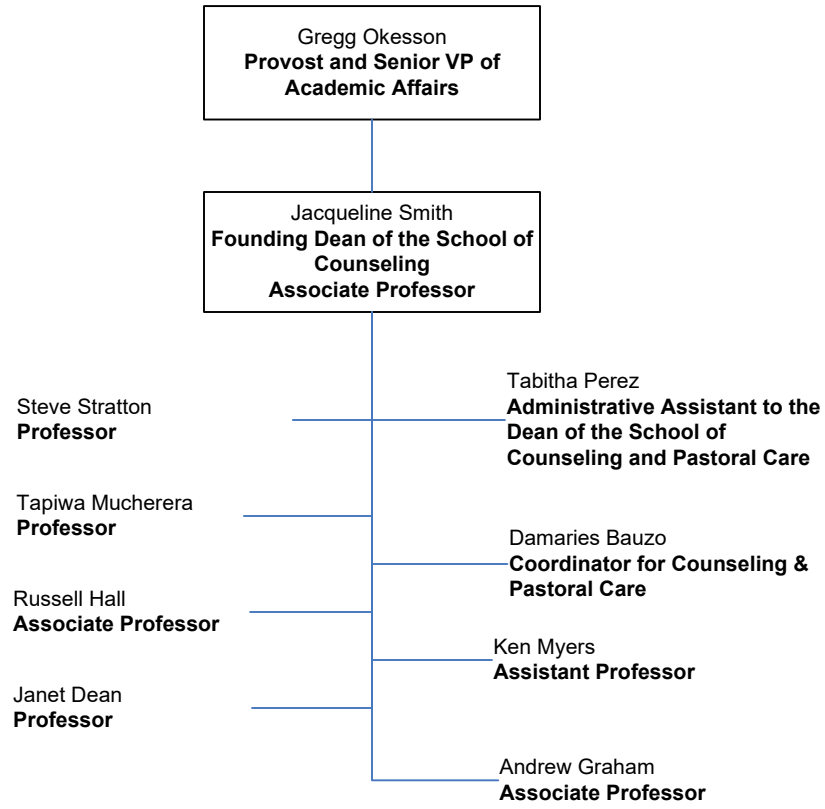
Martha Santana
**Administrative Assistant
to the Director of ALC**

Enrique Hernandez-Vigil
**Associate Director of
Recruitment & Student
Success for ALC**

Marla Ortiz
**Coordinator of Strategic
Initiatives (LMFP) and
Thriving in Ministry**

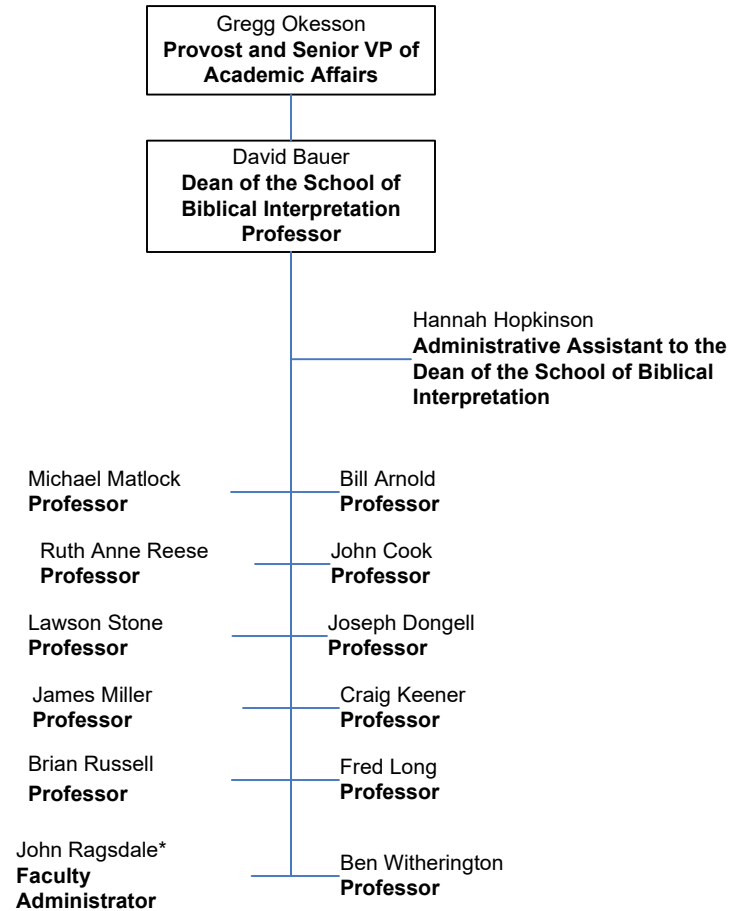
Jonathan Powers
**Associate Dean
Assistant Professor**

School of Counseling



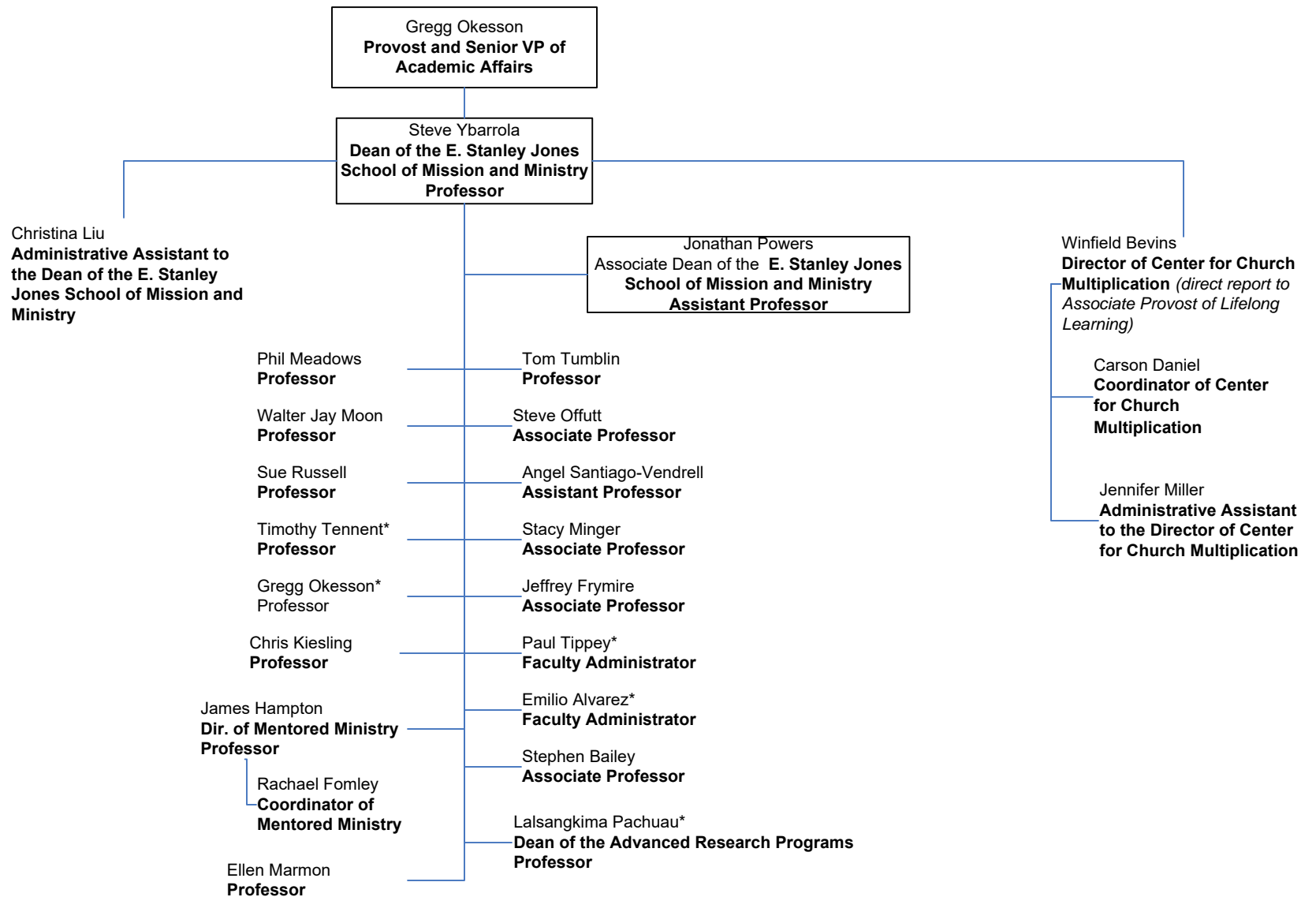
* Holds another primary position other than teaching, org chart merely reflects reporting relationship for teaching duties

School of Biblical Interpretation



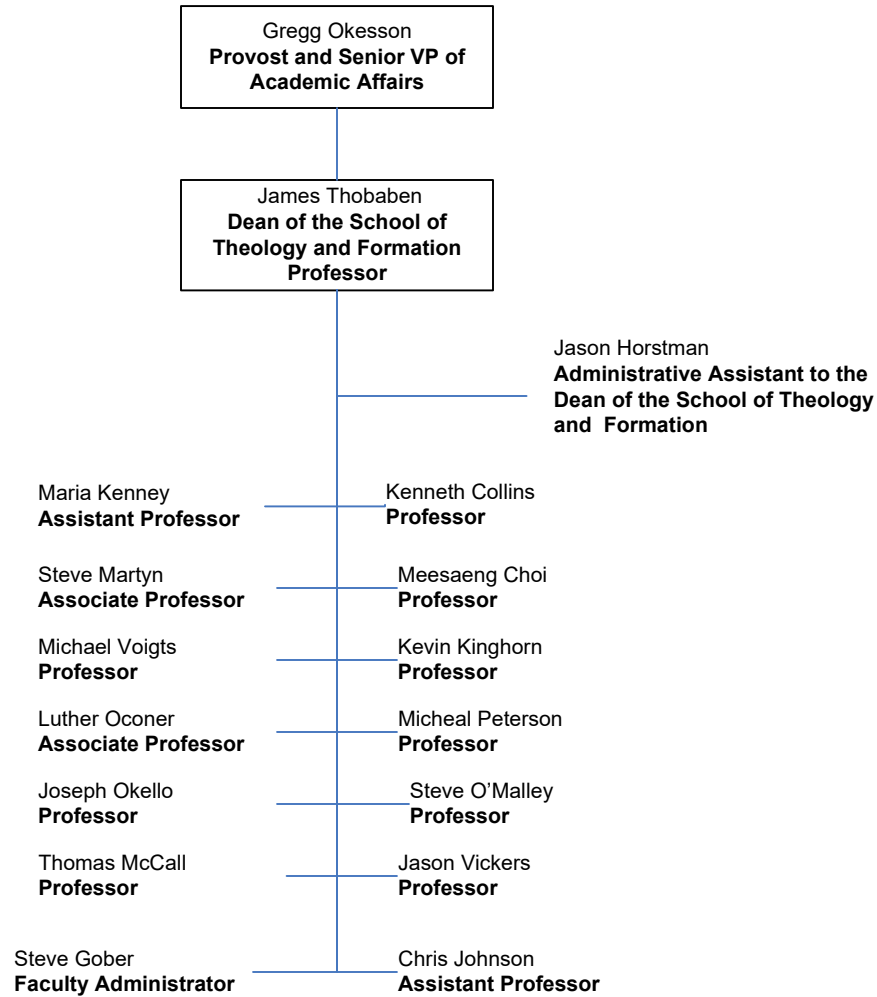
* Holds another primary position other than teaching, org chart merely reflects reporting relationship for teaching duties

E. Stanley Jones School of Mission and Ministry

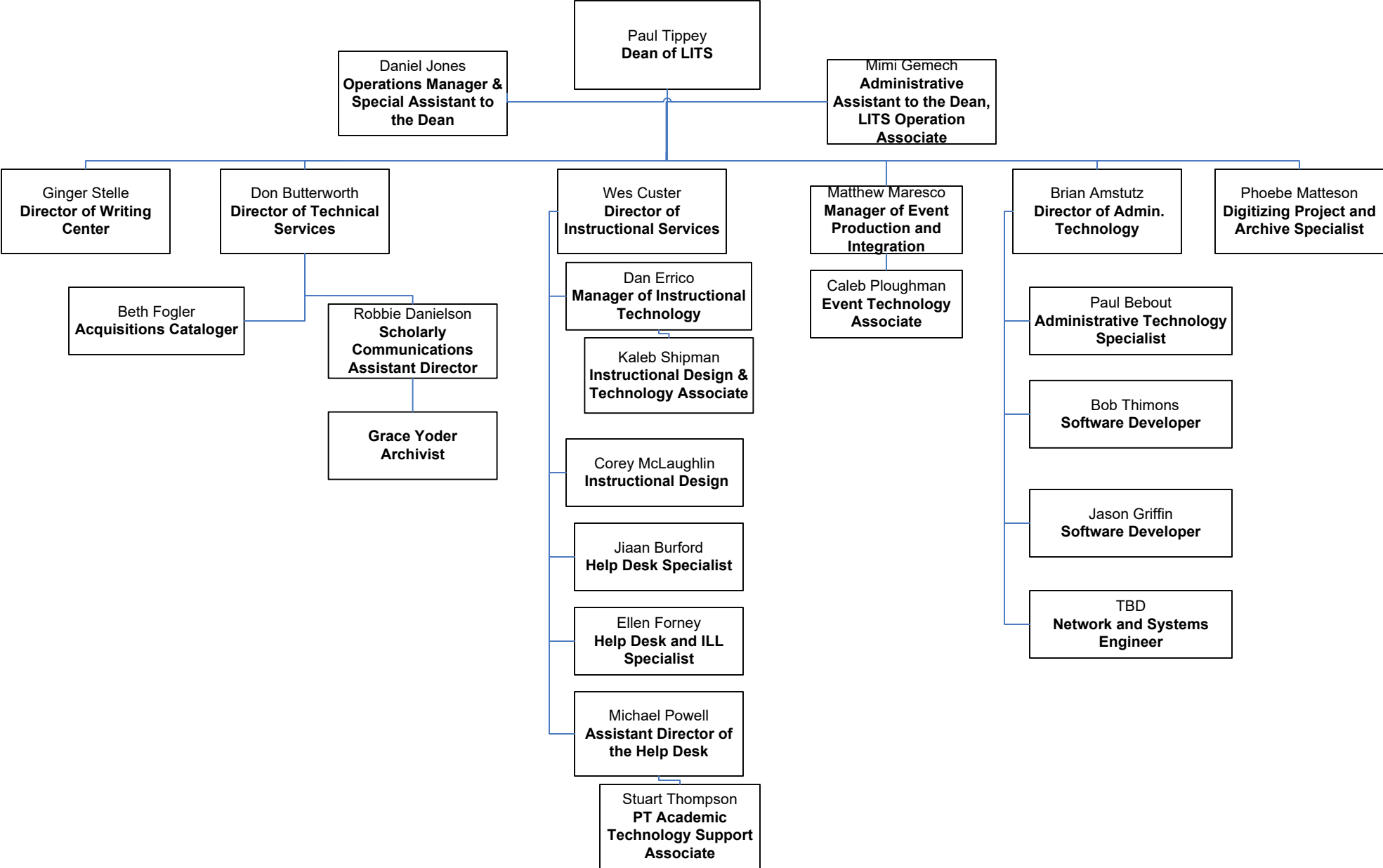


* Holds another primary position other than teaching, org chart merely reflects reporting relationship for teaching duties

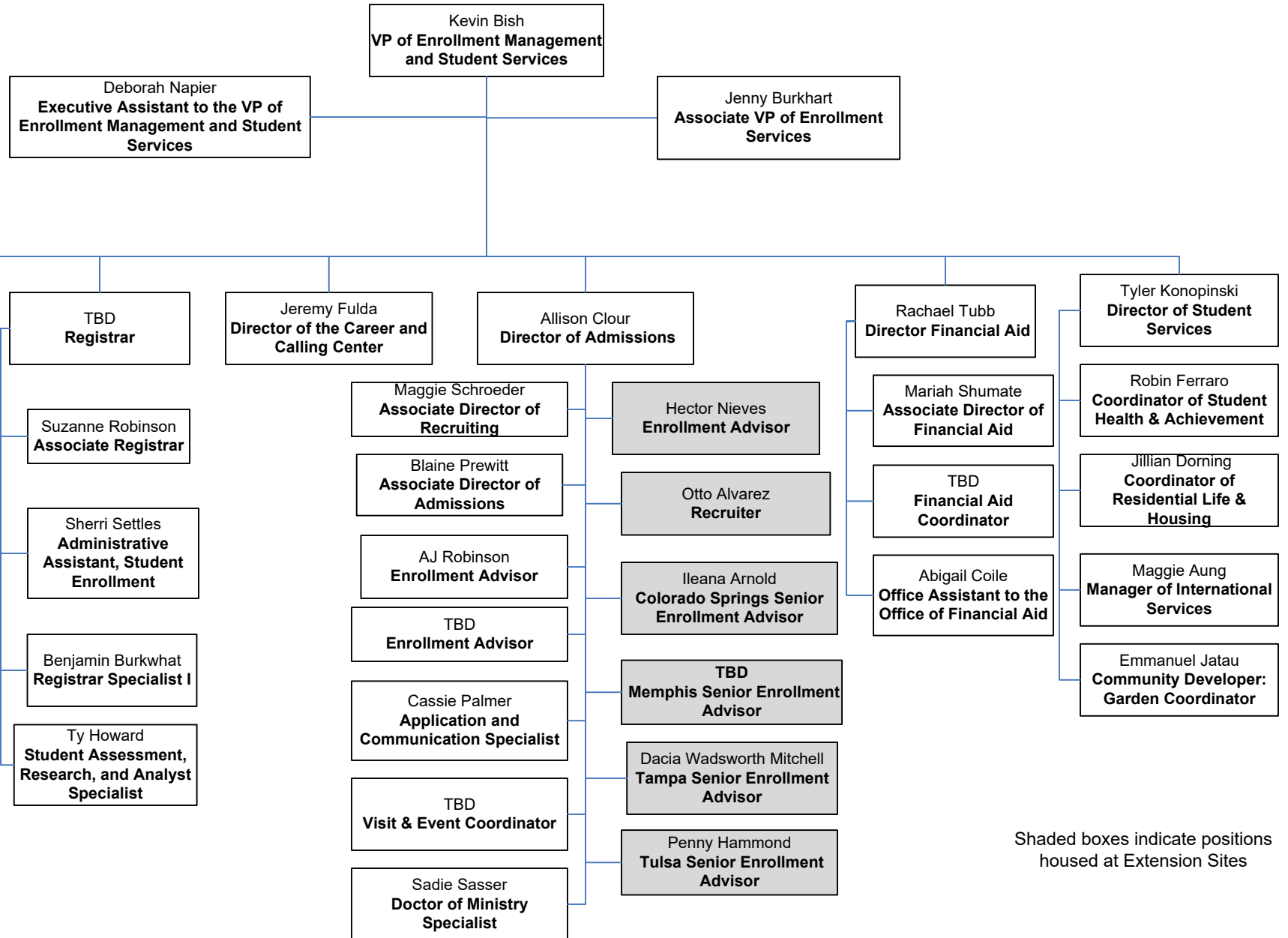
School of Theology and Formation



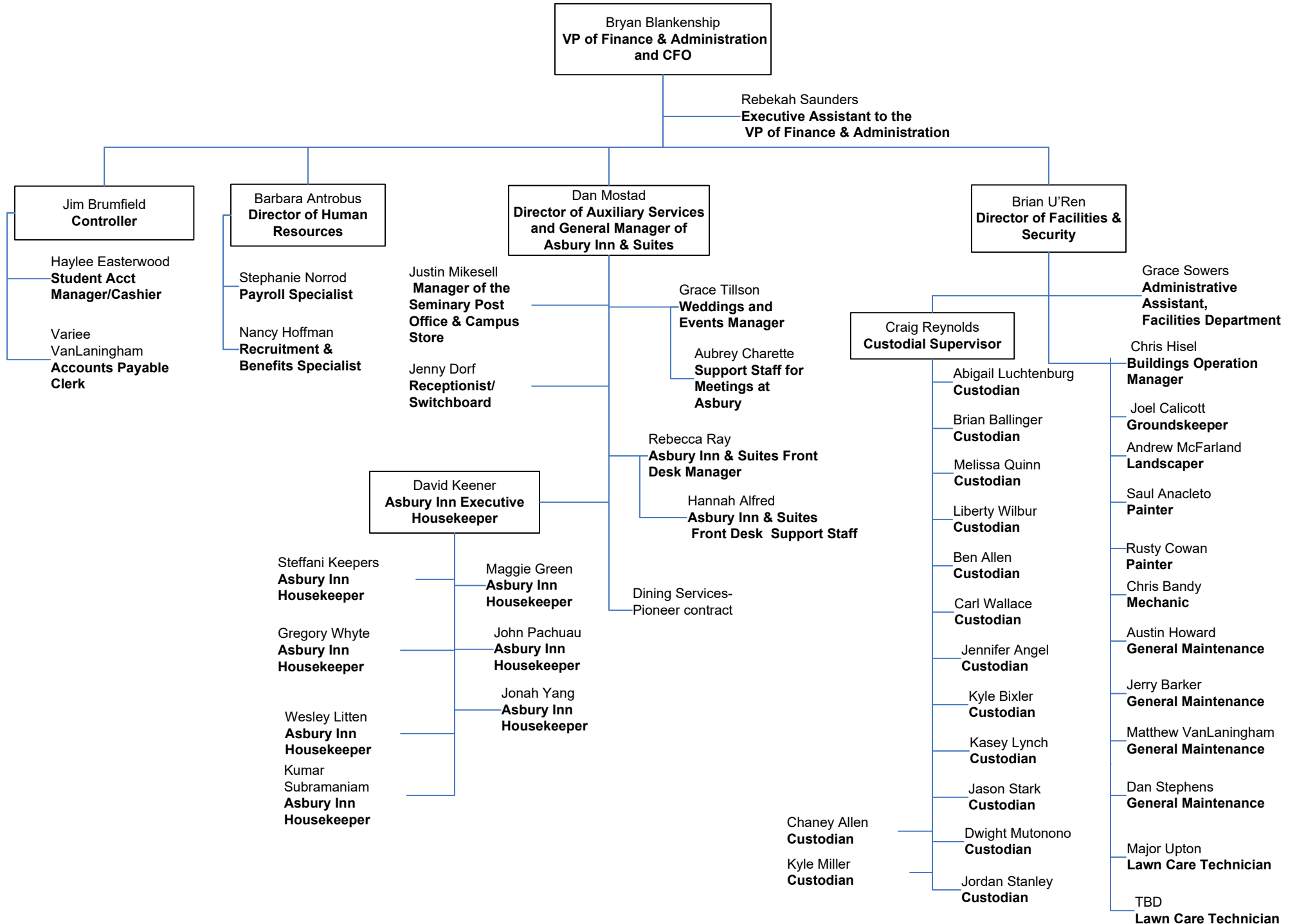
Library, Information, & Technology Services (LITS) Department



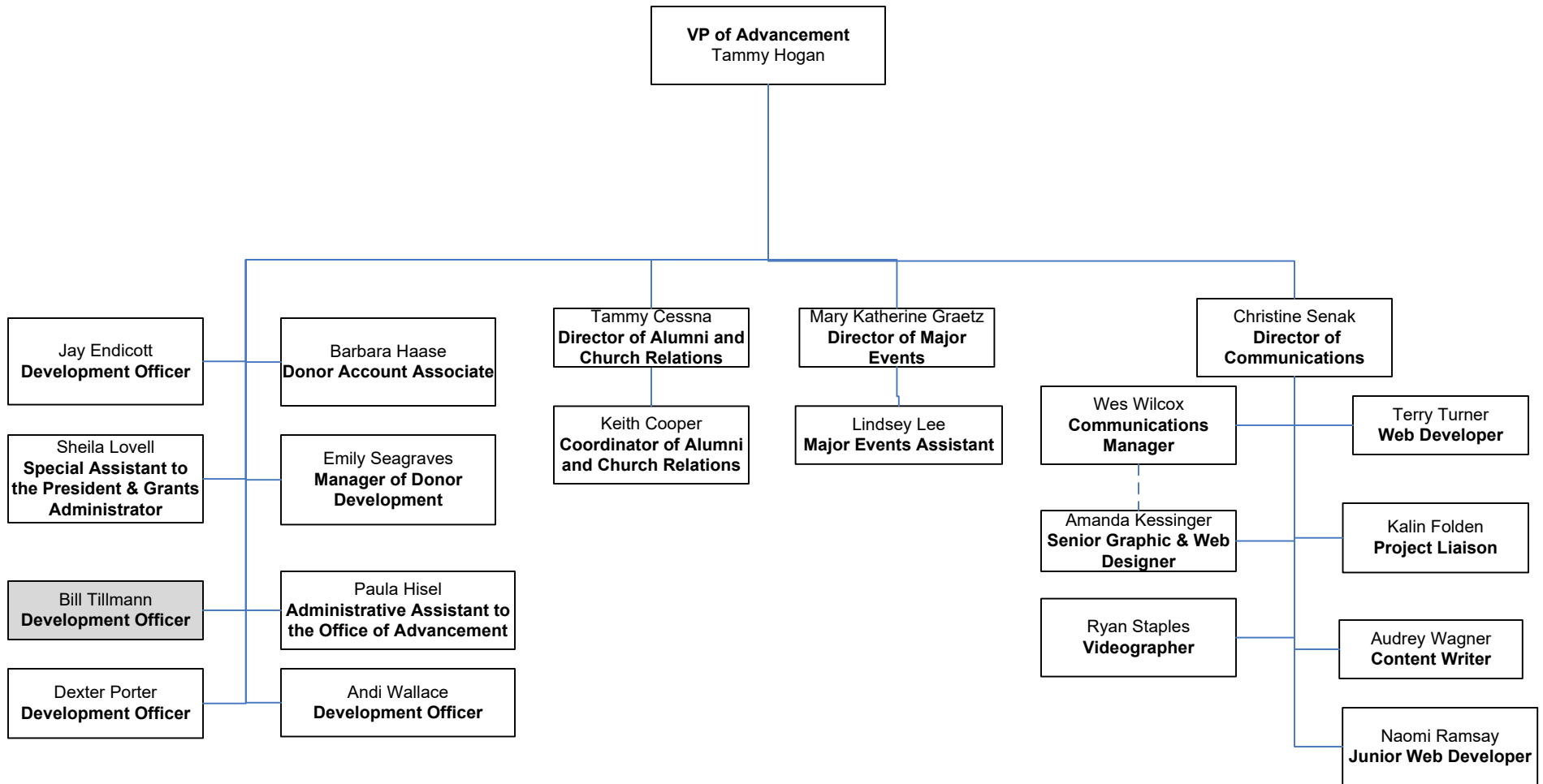
Enrollment Management and Student Services



Finance & Administration



Advancement



Shaded boxes indicate positions housed at Extension Site

Formation

